

# SAHAJA

## Ecosystemic Culinary Odyssey

ECOSYSTEMIC

*Sri Lanka*

JOURNEY

rainforest retreat is a sanctuary of wellness and conscious living, offering immersive nature experiences, rejuvenating tranquility, and a culinary journey centered on authentic, ecosystemic Sri Lankan cuisine.

JAN 2026





# SAHAJA

ECOSYSTEM

*Sri Lanka*

RETREAT

සහજ (Sahaja) means "natural" in the sense of being innate, spontaneous, and unforced. It describes something that exists or occurs by its own true nature.

CONCEPT PROPOSAL

JAN 2026

© 2026 SAHAJA Rainforest Retreat. All rights reserved.

This document and the concepts, designs, and proprietary information contained within are the exclusive intellectual property of SAHAJA. No part of this proposal may be reproduced, distributed, or transmitted in any form without prior written permission.

ECOSYSTEMIC



RETREAT

SUMMARY

The Origins of Renewal

Why Sri lanka ?

Our Vision

PILLAR 01

ECOSYSTEM

PILLAR 02

CULINARY

PILLAR 04

CULTURE

A New Lexicon *for* Opulence

Revenue Model







ECOSYSTEMIC

RETREAT

WELCOME TO SAHAJA

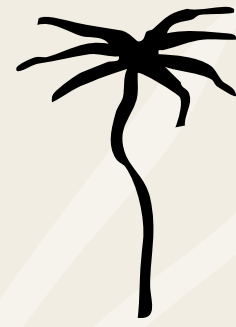
# The Origins of Renewal

In a world increasingly disconnected from nature, individuals are losing touch with the simple yet essential elements of inner well-being.

We know that the connection between humans and the forest is real, and that to benefit from its gifts, one simply needs to open themselves to receive them.

This retreat is designed to help our guests listen to their needs, develop their abilities, and progress on their path, the path of balance between body and mind, while rediscovering the true value and magic that lies within.

Be yourself, at the heart of living nature with us!



# Why Sri lanka ?

ONE ISLAND, A WORLD OF ECOSYSTEMS

**Sri Lanka isn't just a destination, it's a living classroom in harmony. Renowned for its lush rainforests and beautifully preserved wildlife, the island is also a stunning mosaic of interconnected ecosystems.** From dense mangroves and semi-arid plains to vibrant coral reefs and misty highlands, Sri Lanka offers a complete natural palette within a single, accessible paradise.

This rich ecological diversity is the foundation of our vision. It allows us to design not just one retreat, but a future collection of experiences, each dedicated to a unique ecosystem. Guests will not only connect with a unique landscape, but also savor its essence through a cuisine crafted from native ingredients of that very ecosystem. This holistic exploration offers fresh pathways to balance, where every sense is engaged and every meal tells the story of the land.



# Why Sri Lanka ?

A NETWORK OF ECO-RETREATS

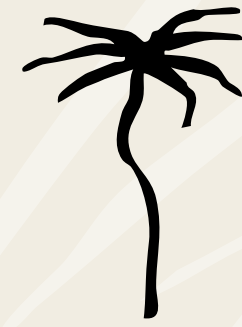
This project is designed to grow organically across Sri Lanka's diverse natural landscapes. Our vision is to create a connected network of sustainable retreats, each uniquely integrated into a distinct ecosystem. The journey begins with our flagship retreat in the **Rainforest**, serving as Phase One and the foundational model. Following this, we will expand to establish subsequent retreats in the **Semi-Evergreen** forests & **Grasslands**, and finally along the **Coastal** ecosystem. Each new retreat will be tailored to its environment, offering guests a profound, place-based experience while promoting conservation and deepening their connection to a different facet of the island's natural heritage.

## SAHAJA *Retreat*

- 1 PHASE 1: RAINFOREST RETREAT  
*Potential location: Runakanda Rainforest*
- 2 PHASE 2 : GRASSLAND RETREAT  
*Potential location:*
- 3 PHASE 3 : COASTAL RETREAT  
*Potential location:*
- 4 PHASE 4 : FLAGSHIP RESTAURANT (3 ecosystem)  
*Location: Colombo*

- |   |  |
|---|--|
| ● Monsoon Scrub Jungle                      | ● Rainforest & Grassland <900 m        |
| ● Semi-Evergreen Forest, Grassland & Shrubs | ● Rainforest & Grassland 900 – 1,500 m |
| ● Intermediate Rainforest                   | ● Rainforest & Grassland > 1,500 m     |





# Our Vision

REDEFINING LUXURY IN THE HEART OF THE WILD

Our vision is to establish this “Ecosystemic” Retreat as the definitive sanctuary of wild luxury in Sri Lanka. We will create an unparalleled, immersive experience where world-class gastronomy, profound respect for endemic biodiversity, and authentic local culture converge within an exclusive, low-impact tented camp.

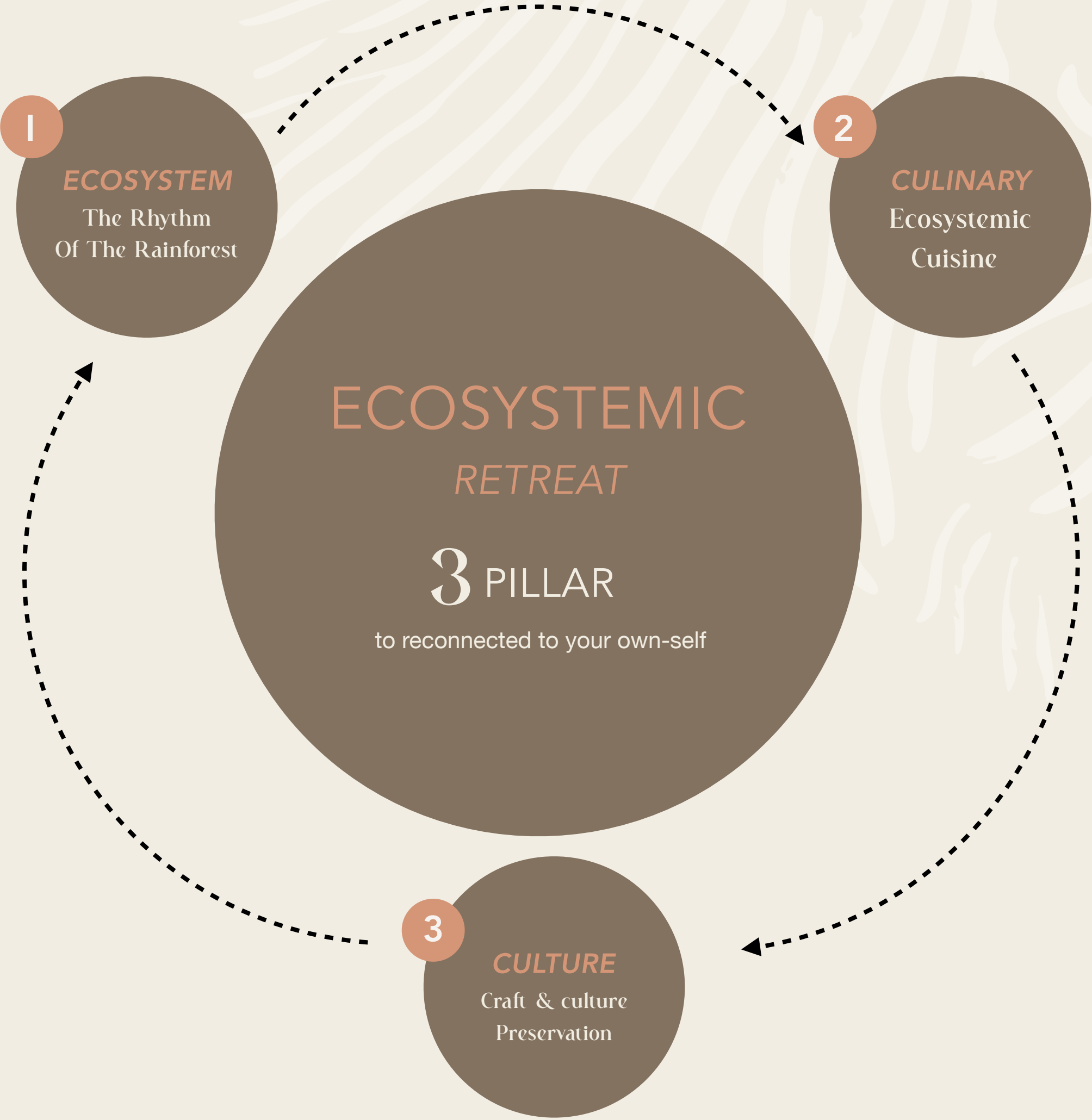
This is not merely a place to stay; it is a portal to the living, breathing heart of the Sri Lankan Ecosystem. We are redefining luxury by measuring it not in opulence, but in the quality of silence, the depth of connection, and the integrity of our environmental and social footprint.



# Our Vision

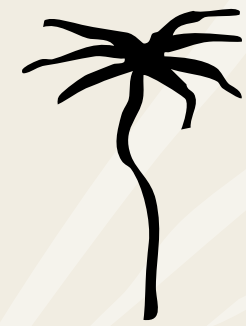
## OUR VISION RESTS ON THREE PILLARS

This Rainforest Retreat is an intentional journey, a structured path designed to guide you from the fragmented pace of modern life to the deep, resonant harmony of the natural world. Our philosophy is built upon three core pillars that work in concert to facilitate a profound and lasting transformation.



01

PILLAR



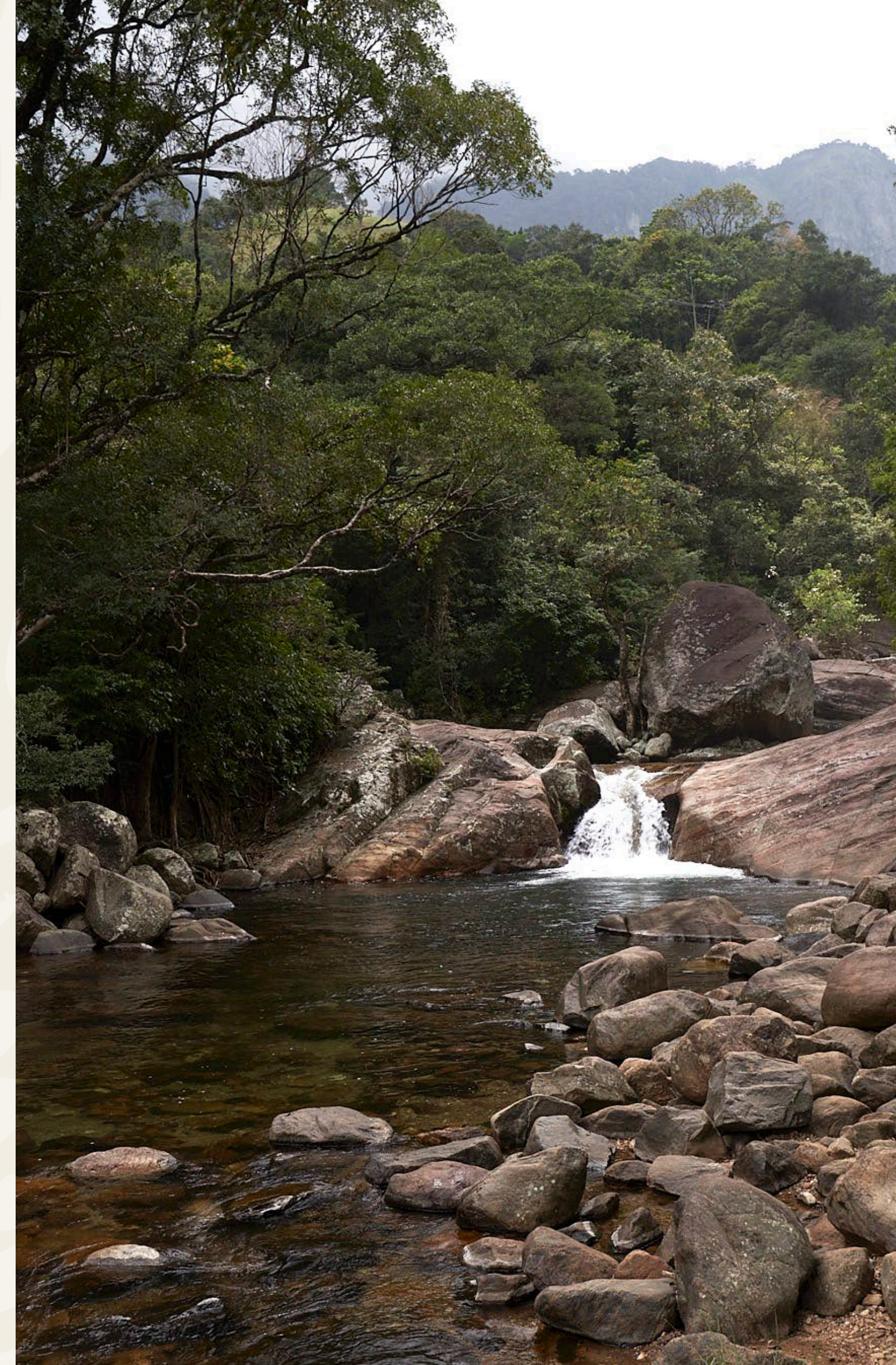
PILLAR 01

# ECOSYSTEM

The Rhythm Of The Rainforest

Welcome to the first pillar of our vision: the **Ecosystem**. This initial retreat is your gateway to the heart of the rainforest. It is a place where you can truly immerse yourself in the living pulse of this ancient environment. Here, we invite you to explore its hidden wonders, understand its delicate balance, and learn to live in harmony with its timeless rhythm.

This is more than a visit, it is an invitation to connect deeply with the land, to listen to its stories, and to become part of its natural cycle. Every step, every breath, and every discovery here is guided by the rainforest itself.



# 01

PILLAR

## THE RHYTHM OF THE RAINFOREST

*Weaving Yourself into the Web of Life*

### EXPERIENCES

## A Reconnection with the Wild

Our first pillar invites you to step beyond observation and into active participation with the rainforest's living pulse. Through guided walks that teach you to read the ancient trails and medicinal plants, dedicated wildlife observation at dawn and dusk, magical night explorations revealing bioluminescent wonders and nocturnal life, discoveries of secluded waterfalls and vital waterways, and unique canopy perspectives, you will not just visit the ecosystem—you will learn to walk in step with its rhythm. This immersive sensory journey is the essential foundation for understanding, respecting, and truly living with this magnificent web of life.

#### CULLINARY EXPERIENCE:



Jungle to Table (culinary journey)



Rainforest Omakase (restaurent)



Fusion Sri Lanka cuisine (restaurant)



01

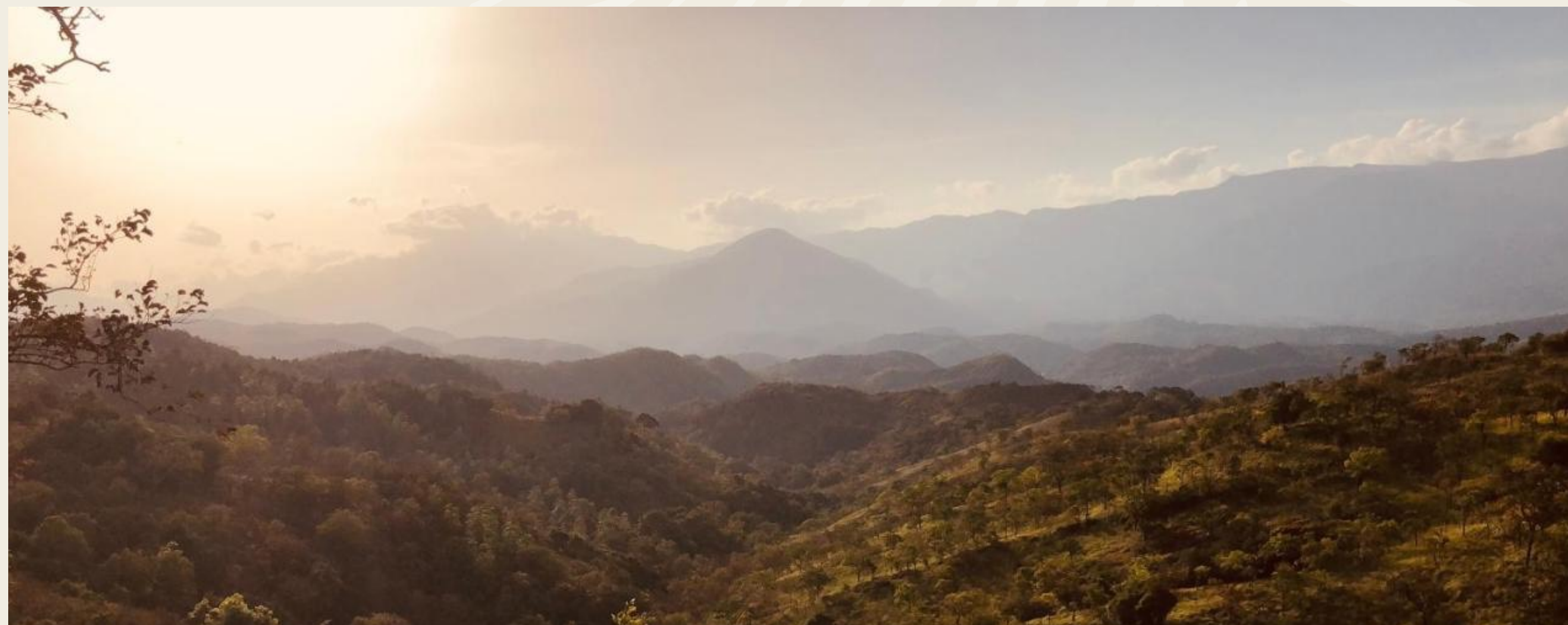
PILLAR

## THE RHYTHM OF THE RAINFOREST

*Weaving Yourself into the Web of Life*

# The Forest as Timekeeper

The Forest as Timekeeper: Our days are not dictated by the clock but by natural events: the Dawn Chorus of birdsong, the golden hour of Morning Light perfect for exploration, the quiet Midday Repose when the forest rests, and the magical transition at Dusk, when the diurnal creatures sign off and the nocturnal symphony begins.

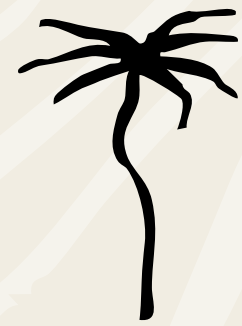


**Guided by Elements:** Activities are intuitively aligned with the weather and light. A sudden rain shower becomes an invitation for a meditation session under the canopy; a clear night transforms into an opportunity for celestial storytelling, free from light pollution.

**The Gift of Slowness:** By moving at the forest's pace, you rediscover a more natural rhythm for yourself—one of observation, patience, and deep appreciation for moments, not minutes.

02

PILLAR



PILLAR 02

# CULINARY

The Gastronomic Journey

Welcome to the heart of our culinary philosophy, where every meal is a direct conversation with the land. Here, we practice an **Ecosystemic Cuisine**, a culinary journey crafted exclusively from ingredients that grow, forage, and thrive within the bounds of our rainforest. This is more than local sourcing; it is a deliberate act of communion.

By tasting the wild herbs, the native tubers, the tropical fruits, and the sustainably harvested resources of this ecosystem, you are invited to deepen your connection in the most fundamental way, through nourishment. Each dish tells the story of this place, translating the forest's bounty into a tangible, flavorful experience that reconnects you, bite by bite, to the living rhythm of the earth..



02  
PILLAR

## THE GASTRONOMIC JOURNEY

*Taste the Unknown*



# The Gastronomic Journey

Our future remote location is not a constraint; it is our greatest asset, granting us exclusive access to a living larder that is impossible to replicate. This is not rustic camp food; it is Wild Fine Dining, where creativity and technique elevate hyper-local, wild ingredients into an unforgettable narrative for the epicurean explorer.

### The Philosophy: "Taste the Unknown"

For the true gastronome who has tasted everything the world has to offer, we offer the ultimate frontier: the untouched flavours of the rainforest. Our menu is a map to the unknown, each dish a chapter in the story of this specific ecosystem.



**Culinary Design & Technique:** From the Dish to the Plate, Everything is Designed Locally: Our tableware is handcrafted by local artisans from river clay, reclaimed jungle wood, and woven bamboo. The plate itself is part of the story. Our techniques are a fusion of ancient wisdom and modern precision: low-temperature smoking over wild cinnamon bark, fermenting with endemic yeasts, and creating translucent gels from jungle springs.

02

PILLAR

## THE GASTRONOMIC JOURNEY

*Taste the Unknown*

## EXPERIENCES

## Jungle To Table

*Ecosystemic, Culinary Alchemy*

**The 'Jungle-to-Table' Epicenter.** We will transplant the acclaimed "Jungle to Table" philosophy from Jingmai Mountain to the unique terroir of Sri Lanka. Guests will become active participants in a culinary journey—foraging with expert guides, understanding the provenance of every leaf and spice, and witnessing a master chef transform these wild finds into an exquisite narrative on a plate. This will be the most ambitious and authentic culinary experience offered in Sri Lanka's wilderness.

## CULLINARY EXPERIENCE:



Jungle to Table (culinary journey)



Rainforest omakase (restaurent)



Fusion Srilankan cuisine (restaurent)

## CRAFT BEVERAGES:



Rainforest lounge (coffee and beverage)

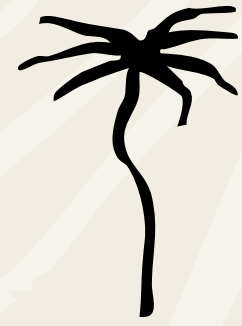


Afternoon delight (tea &amp; pastry)



03

PILLAR



PILLAR 03

# CULTURE

A Genuine Cultural Bridge

If the Ecosystem taught us to walk with the land, and the Cuisine taught us to taste its essence, this third pillar invites us to listen to its oldest stories. Here, we honor the **Human Thread**—the living culture and ancestral wisdom that has shaped, and been shaped by, this rainforest for generations. This is a journey into the heart of community, where you will not merely observe, but participate.

Through hands-on workshops with master artisans, learning ancient crafts that weave, carve, and dye with the forest's own materials, and through shared moments, songs, and stories, you become a temporary steward of this heritage.



# 03

PILLAR

## CONSERVATION & CULTURE

*The Human Thread – Stewardship of Craft & Culture*

### EXPERIENCES

## A Genuine Cultural Bridge

*Workshop and story telling*

This retreat will be a symbiotic venture with the local community. We envision a partnership where village elders are the storytellers, local artisans are the featured artists, and the camp becomes a platform for cultural exchange and economic empowerment. The retreat will be a living archive of local traditions, ensuring that guests leave not only with memories of the forest but with a deep understanding of its human heritage.



03

PILLAR

## CONSERVATION & CULTURE

*The Human Thread – Stewardship of Craft & Culture*

# Conservation & Journey

**True luxury is reciprocal. The final pillar moves beyond personal enrichment to active participation, ensuring your presence contributes positively to the preservation of the rainforest and the vitality of its indigenous cultures. This transforms a retreat into a meaningful exchange.**



**Conservation in Action:** Your stay directly funds reforestation and wildlife protection programs. Experiences include "Guardian Walks" with our conservation team, where you might participate in a tree-planting ceremony or learn about anti-poaching efforts, leaving a tangible, positive legacy

**Living Culture:** Connection extends to the human ecosystem. You will engage with local community elders, not as performers, but as knowledge-keepers—learning ancient crafts, understanding medicinal plants, and hearing stories that have been passed down through generations.

**The Reciprocal Ethos:** This pillar embodies our core belief: to take away the richness of the forest, one must also give back. You leave not as a spectator, but as a temporary custodian, woven into the ongoing story of this land.



ECOSYSTEMIC

RETREAT

POSITIONING

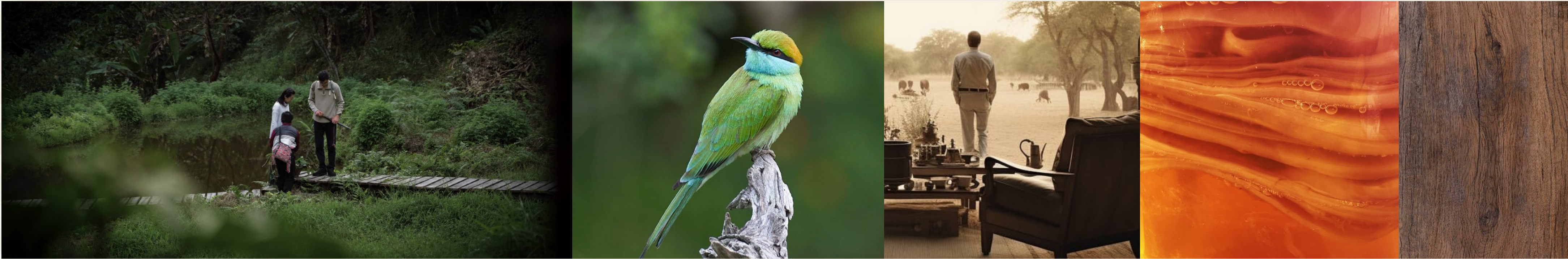
REDEFINING LUXURY

# A New Lexicon *for* Opulence

Here, we are not just redefining luxury; we are rediscovering its very language. We invite you to forget the old symbols, the imported, the polished, the silent in a sterile way. Instead, we offer a new vocabulary of value, written in the grammar of the forest itself. This is where opulence is measured in authenticity, connection, and the profound quiet of a world left wild. Prepare to learn a new way to experience the extraordinary.

# A New Lexicon for Opulence

REDEFINING LUXURY



## Caviar vs. Wild Ingredients

*We fundamentally redefine the concept of a delicacy. Caviar is a trophy, a uniform luxury item whose value is derived from its global brand and scarcity. At this retreat, our "caviar" is a wild ingredient, the taste of the unknown.*

## Silence vs. Modern World

*The most exclusive amenity we offer is absolute silence. It is a curated experience, a sanctuary from the noise of the modern world, punctuated only by the authentic sounds of the forest.*

## Space vs. Impact

*Luxury is measured in inverse square metres. The less land we disturb, the more valuable the experience becomes. The true extravagance is the untouched wilderness that surrounds you.*

## Champagne vs. Terroir Fizz

*We replace imported champagne with a bespoke, with handmade beverages crafted from hyper-local ingredients. It tells a story of the soil, the rain, and the forest air.*

## Marble vs. Living Grain:

*The cold polish of marble is exchanged for the warm, unique grain of hand-polished wood*



ECOSYSTEMIC

RETREAT

POSITIONING

REDEFINING LUXURY

# Revenue *Model*

Our revenue model is as integrated and intentional as our retreat experience. We move beyond the transactional "room-night" to a holistic framework where value is derived from deep immersion, curated transformation, and a commitment to circular reciprocity. Our financial sustainability is interwoven with the ecological and cultural sustainability of our place.

ECOSYSTEMIC

RETREAT

# Core Revenue Streams

## *The Immersive Journey Package (Primary Driver)*

**Structure:** A mandatory, all-inclusive package for all guests, with a 3-night minimum stay. This is not a hotel stay; it is a curated narrative.



**Inclusions:**

- Accommodation in a standalone forest sanctuary Luxury Tented Camp.
- All daily rituals (e.g., guided ecosystem walks, mindfulness sessions at dawn).
- All culinary experiences: daily foraging-based meals, bespoke tasting menus, terroir beverages.
- A suite of cultural immersion workshops (e.g., one master craft session, storytelling evenings).
- Dedicated Journey Guide (naturalist & facilitator).



**Pricing Philosophy:** Premium, value-based pricing reflecting the exclusivity (limited capacity), deep curation, and transformative nature of the holistic experience.

# Revenue *Model*



ECOSYSTEMIC

RETREAT

# Core Revenue Streams

*The Immersive Journey Package (Secondary Driver)*

**Concept:** The ultimate luxury offering—complete and exclusive privatization of the retreat for a single, curated celebration.



**Transformation:** We become a wholly bespoke stage for life's most significant moments (e.g., weddings, proposals, milestone birthdays, corporate leadership retreats), serving only one party.

**Value Proposition:** A fully co-created itinerary and experience designed around a personal theme, ensuring the event is an authentic and profound expression of our philosophy, not merely hosted in our space.



**Pricing:** Commands a significant exclusivity fee with bespoke pricing reflecting total curation, full property access, and comprehensive personalization.

# Revenue *Model*



# Revenue *Model*

## The Forest Pantry & Artisan Atelier

*Boutique (Secondary Driver)*

**Concept:** A physical and digital boutique that extends the retreat experience beyond the stay, offering tangible pieces of the forest and its community. It is both a curated marketplace and a narrative of provenance.



### CORE PRODUCT CATEGORIES:

**Artisan Craftsmanship:** Curated works from our partner artisans (ceramics, textiles, woodcraft), each accompanied by the maker's story and the cultural tradition it represents.

### Epicurean Delights:

*Wild Harvests:* Honey from our on-site apiaries or partnered forest communities, rare wild spices, and foraged botanical salts.

*Craft Provisions:* Small-batch, non-alcoholic craft beverages (fermented botanical shrubs, herbal infusions) and artisanal spirits or liqueurs distilled from local, seasonal ingredients.

*Wellness Apothecary:* Blended herbal teas, medicinal tinctures, and balms created from indigenous plant knowledge.

*Signature Retreat Line:* A limited collection of co-branded goods developed exclusively with our artisans and growers (e.g., a ceramic vessel paired with a specific herbal tea blend).



**Physical Boutique:** Located on-site for guests, with high-touch service and storytelling.

**Digital E-Commerce:** A seamless online store allowing guests to replenish their experience and for a global audience to connect with our producers.

# SAHAJA

RAINFOREST RETREAT



ECOSYSTEMIC

*Sri Lanka*

JOURNEY

rainforest retreat is a sanctuary of wellness and conscious living,  
offering immersive nature experiences, rejuvenating tranquility,  
and a culinary journey centered on authentic, ecosystemic Sri  
Lankan cuisine.